

## BIDFORD BRIDGE

### REPORT FROM THE MULTI-AGENCY MEETING HELD ON MONDAY 30TH NOVEMBER 2015

Following the incident on 9th June 2015, which resulted in the closure of Bidford Bridge for a five month period over the busy summer season, Bidford-on-Avon Parish Council sought to work together with Warwickshire County Council (WCC) with the aim of finding solutions to the ever-present problem of HGVs regularly crossing the bridge illegally.

Another issue to be considered is the burden of heavy traffic through Welford Road, Barton when the bridge was closed, and whenever the lorries are turned back from the bridge. The Parish Council is delighted to be able to advise that WCC welcomed its initiative and an initial multi agency meeting, which included Cllr Brain, County Councillor for Bidford as well as a number of WCC Officers from various relevant departments; Historic England, Police and Bidford on Avon PC. The initial meeting to explore what can be done in the short, medium and long term to minimize the risk not only to Bidford Bridge but also Welford Bridge, as well as protecting Barton, took place on Monday 30th November. It was arranged at short notice to ensure the Parish Council had some information on what strategies were being considered, in time for its Parish Council meeting that same evening. The meeting was approx. two and half hours long and looked at a number of proposals – some were discarded as not being feasible and others will be considered further. What became evident is that it is not an easy problem to solve, and will require a number of small adjustments as opposed to one big one!!

#### BOLLARDS

This was a measure considered and approved whilst the repair work was still ongoing.

The intention of the bollards is to

- Align the bridge (i.e. make a straight path)
- Protect the parapets
- Alert drivers to the narrowness of the bridge

WCC is aware of the issues that have been raised by some residents, but believe time should be given to monitoring the effectiveness of the bollards before reviewing the situation. At the Parish Council meeting, it was pointed out that a mobility scooter can drive into the parapet space, but has to reverse out – a dangerous manoeuvre. This has been pointed out to the Bridge Project Manager

#### NON FEASIBLE PROPOSALS

- **Pads** - these would have to be regularly calibrated (once a month) if they are to be used – which is considered difficult to carry out. Furthermore, if an HGV drives over unloaded, despite the fact that it is breaching the weight limit, it would not register on the pads.
- **Height restriction** – Historic England would not be able to approve this
- **Retractable bollards** – concerns were expressed due to the fact that they would be going up and down quite regularly and this raises the possibility of them breaking down – not something we would like to see happen if it an emergency vehicle trying to get through
- **Traffic signal regulation for**

**pedestrians** – considered unfeasible as pedestrians walk at different rates; some also stop to look over the bridge, and so it would be difficult to allocate appropriate time and it risks creating traffic congestion

#### FEASIBLE PROPOSALS

- **CCTV** - however, two things need to be clarified:  
**Fines** - are not paid locally, but are sent to the Home Office for it to distribute as it sees fit – so there is no direct financial benefit to either the Policy or the Highway Authority. Unlike normal Vehicle Registration Recognition cameras, where an alert is automatically raised if the vehicle is registered stolen or has not paid the road tax – someone will have to go through every single registration to see which ones do not correspond to a standard vehicle, and then would have to investigate the plated weight of the vehicle in question etc. Time and Resource consuming, However, Police are looking at this possibility. It would appear that, in other counties, this is carried out by the Trading Standard Authority – and the Parish Council is investigating this possibility.
- **Width Restriction** – it was recognized that this, physical impediment, would be the most effective was of stopping HGVs and other inappropriate vehicles, but it is not problem free, so it is a proposal that will have to be investigated further, weighing the advantages and disadvantages to evaluate its benefits.
- **Improved signage** - working together with Worcestershire and Gloucestershire, County Councils to see what can be done to prevent HGVs getting to the bridge in the first place directing them towards the

CONTINUED PAGE 2 ►

# BIDFORD BRIDGE

## CONTINUED FROM PAGE 1

A46 – also allowing space for them to turn – though this is problematic bearing in mind the narrowness of country roads and the large turning point required for articulated lorries.

- **20 mph speed limit** on the bridge itself

## NEXT STEPS

It was agreed that the first step would be to carry out a Traffic Area Wide Survey of the whole area. This will give a better picture as to where the HGVs are coming from, and where they driving to. Once this information has been obtained and collated, it should make it easier to consider what measures will be most effective. It is envisaged this will take place in the new year and a second meeting will be organized thereafter. The Parish Council endorsed this proposal as an excellent starting point.

**BARTON** – Assurances were sought, and given, that whatever measures are put in place, they will not have an adverse effect on Barton.

Barton is seeking a ban on HGVs through the hamlet – a so called Environmental Weight Restriction Order. The WCC Officer advised that currently the County c has no funding allocated to “freight” – however, some £6k funding could be found and allocated with the support of the County Councillor.

To be effective, the restriction should apply to Barton itself and, at the other end, Welford on Avon – in order to prosecute, you need to see a HGV enter one end and exit the other.

The Parish Council is aware that this is only the beginning, but it would like to reassure its local community that it will continue to work with County Council, supported by Cllr Mike Brain, to ensure measures are investigated for their feasibility. The problem is too big for a quick solution, but it is hoped that working in partnership, solutions can be found.

Of course, the best solution would be a third bridge, dedicated to traffic – with the increased number of dwellings both in Bidford itself, and in Honeybourne and Long Marston, it would be ideal if our ancient Bidford Bridge could revert to being what it was meant to be – A PEDESTRIAN CROSSING OVER THE RIVER AVON.

# WATCH YOUR FOOTSTEPS... AND YOUR HEALTH!

While I know the topic of dog waste on the streets isn't usually particularly interesting, it's my task to bring about some sort of epiphany in your mind. As I'm sure most of you have experienced, it's at best a nuisance when you find it covering the bottom of your shoe. At worst, it can be extremely dangerous, especially to vulnerable members of the community. Unfortunately, it's a growing issue. People who do not clean up after their dog can face a fine or further punishment, but realistically this is no motivation to change ways. I think that a better encouragement is to consider the greater good: personal and public health. In this article, I hope to show you exactly why leaving dog waste isn't a harmless act.

To open with the obvious, carnivorous species (dogs, cats, humans!) produce some pretty foul poo. I can promise this from career experience! It causes a smelly, unsightly mess in public places. However, the greater problem is what is in that poo. It is well documented

“While I know the topic of dog waste on the streets isn't usually particularly interesting, it's my task to bring about some sort of epiphany in your mind.”

that even healthy dogs can carry and spread a large number of nasty bugs through their droppings. These can cause severe disease in vulnerable people: the young, the old or those with a weaker than normal immune system. These nasties can spread very easily on shoes, on wheels and on hands, and we all know that youngsters love putting things in their mouths!

## LET'S GET SCIENTIFIC

22 out of every 100 healthy dogs will spread *Campylobacter* species – the bacteria on the news that are associated with raw chicken and cause vomiting and diarrhoea. 280,000 reported human cases happen in the UK every year.

20-40 out of every 100 healthy dogs will spread *Salmonella* species. Most people have heard of *Salmonella* for the nasty vomiting and diarrhoea it causes, and this can be fatal. 9,000 reported human cases happened in 2010.

ONE THIRD OF  
DOGS CARRY  
**SALMONELLA\***



Among many other infectious diseases

**PICK UP DOG POO**  
... so that children don't.

\*Wray, Clifford, and A. Wray, eds. *Salmonella in domestic animals*. Cabi, 2000.

Dogs are also known to spread bacteria like *Listeria*, *E-Coli*, *Yersinia* and *Clostridia*. Don't forget parasites too – gut worms, tapeworms, protozoal infections and others.

As a vet, I also have to mention that dog

poop can spread bugs to other animals, as well as people. Many cow and sheep farms with public paths have real problems with dog-spread diseases.

The point of this is not to scare you, but to make you aware of the dangers that exist. There are easy ways to control all of these risks. For a start – if you are a pet owner, keep your dog in good health, visit the vet, and feed a good diet. On a personal level – wash your hands after touching the dog or the dog's things and make use of gloves or good poo bags.

And please pick up those dirty, infectious poos, and put them in the bin. It takes 30 seconds, and one poo bag. If you leave that mess, you risk a fine, but that pales in comparison to the risk faced by the toddler coming along behind you. Medieval plagues taught us to pick up our own mess. Now it's time to change habits around our pets too.

**Greg Steele, Dog Owner, Vet and Pavement Enthusiast.**



# BIDFORD COMMUNITY LIBRARY

BRAMLEY WAY, BIDFORD-ON-AVON B50 4QG



**B**idford Community Library is looking for new volunteers to help out with cover when our regular volunteers are on holiday or ill with the prospect of taking on a permanent shift in the future. Volunteer shifts are generally just two hours a week and we'd give full training and support. Would you be interested in applying so that we can strengthen our team? Our volunteers range widely in age and we are also pleased to regularly offer placements to Duke of Edinburgh students.

Your library is very much more than a roomful of books. We have beautiful premises, adjacent to Bidford a Primary School and the Parish Office in Bramley Way. Although it is social enterprise run by volunteers we are still part of the County Library service and all our stock is top quality; you can request all

the latest bestsellers. In addition we try to provide a welcoming community hub for the village. If you are bored and have nothing to do we permanently have a jigsaw on the go that needs completing, or why not join us on a Friday morning to play board games? On Wednesday afternoons we run a very successful the Knit and Natter group - no experience necessary! There is even a group for junior knitters, the Click Clack Club. In the summer we run activities for children and we are very proud that Bidford consistently has the highest number of children from the Warwickshire community libraries actively taking part in the nationwide Summer Reading Challenge.

We are delighted that we have just been awarded a County Councillors grant to provide a collection of self help books

for anyone interested in mental health issues. If you require mental health support, Springfield Mind Community Outreach are in the library every Monday from 11.00 am to 1.00 pm where you able to talk to an adviser, in confidence, and/or seek information. And, don't forget, Citizens Advice Bureau (CAB) are available at the library the third Friday of every month.

Bidford Library is buzzing and we are keen to talk to people who might be willing to share their expertise in running such a venture. We are looking forward to a busy and exciting New Year. Would you like to be a part of it? If you'd like to know more please call in at the library or email us on [bidfordlibrary@gmail.com](mailto:bidfordlibrary@gmail.com) You can also find information on our website at [www.bidfordonavon-pc.gov.uk/library.htm#volunteer](http://www.bidfordonavon-pc.gov.uk/library.htm#volunteer)

## WILDMOOR SPA TENNIS LEAGUE "FAIR PLAY PLATE" 2015

**T**he "Fair Play Plate" has been awarded for the fourth time since it replaced the Pairs competition trophy in 2012. This is voted on by all the teams from the six divisions. It is decided by votes from the league teams on which side in their opinion they felt was the most convivial both on and off the court and for their after match hospitality. It has nothing to do with their playing ability, just their friendliness, conduct and entertaining

abilities and crosses all divisions. In 2012 Inkberrow C were given this honour, in 2013 it was HDA B of Redditch and in 2014 it was the turn of Chipping Campden C to be recognised, all three teams from Division Four. Of the 47 teams circulated 40 votes were received back. There were 20 teams nominated from all divisions with Evesham A in the Premier, Claverdon A from Division One, Inkberrow B in Division Two and Claverdon C from Division Three all



● Inkberrow 'D' Team above left to right: Gary Whitehouse, Roger Underhill, Dave Johnson & Ian James (Captain)

receiving three votes each. However, only Bidford-on-Avon 'A' from Division Four and Inkberrow 'D' from Division Five received four votes each. So congratulations go to the joint winners and recipients of the Fair Play Award for 2015, Bidford 'A' and Inkberrow 'D'. They will each keep the trophy for six months apiece. First to be presented, at the Annual Presentation day in September, will Inkberrow 'D', who will then hand it over to Bidford-on-Avon 'A' at the League's Annual General Meeting in February for the last six months.

Corin Bishop



● Bidford 'A' Team Squad above from Left to Right: Malcolm Dewsbury, Colin Green (Captain), Paul Bruner, Graham Jackson, Simon Price & Greg Bruner



### Are you concerned about your mental health, or the mental health of a loved one?

Providing mental health support, information and advice to the local towns and villages across Stratford-upon-Avon, Springfield Mind are now working in partnership with Bidford

## SPRINGFIELD MIND COMMUNITY OUTREACH BIDFORD-ON-AVON

Community Library to bring our outreach service to Bidford-on-Avon. Open every Monday from 11am-1pm within Bidford Community Library on Bramley Way, our community outreach provides you the opportunity to speak to a member of staff in confidence, pick up information on local services, or

additionally book a FREE 30 minute 121 appointment to receive more tailored practical support or advice. For more information and other services, visit our website at [www.springfieldmind.org.uk](http://www.springfieldmind.org.uk), or call our office on 01789 298615.



# CLERK'S CORNER LOOKING BACK

## BIDFORD BRIDGE

I imagine that for most of us the closure of Bidford Bridge for 5 months during the summer of 2015 will remain in our memories for some time to come. There is no doubt it had an impact on village life – however, let us look at the positives (as they say, there is always a silver lining....)

- The formation of the Bidford Chamber of Trade and Commerce – set up to help all the businesses in Bidford-on-Avon and organiser of the street event in September, which was a great success and brought a lot of new residents to the High Street to see what it has to offer.
- The Benchmarking exercise, commissioned by the Parish Council to find out what can be done to improve the footprint of the High Street, and how we can encourage local residents to use local facilities
- Pedestrians were able to cross the bridge safely
- Less traffic through the village
- Warwickshire County Council recognising there IS a problem HVGs and wide vehicles crossing the bridge causing damage, which has resulted in the setting up of a multi agency group, which includes the Parish Council and Historic England, to look at solutions to minimise the risk of this happening again.

## NEIGHBOURHOOD DEVELOPMENT PLAN

Very ably led by the Chairman, Cllr Joe Harvey, the Steering Group, which

consists of Councillors AND members of the Local Community, has been making great progress this year and reached the 6 week statutory Pre-submission Draft Policy Consultation – it started on 24th Sept. and ended on 6th Nov. Since then, the information supplied has been collated and will be publicised in the New Year. It is hoped the NDP is still on schedule to be adopted in late Spring/early Summer.

## LOCAL ELECTIONS

Some of you may not have noticed, but Bidford-on-Avon was separated into two Wards for the May elections, Bidford East and Bidford West. You may recall that some of you had to go to the Church Hall to vote and not the usual place which is the Crawford Memorial Hall.

You are also represented by different District Councillors: Cllr Daren Pemberton represents Bidford East, and Cllr Mark Cargill represents Bidford West and Salford Priors.

Although the same applies to the Parish Council, you will all be pleased to note that there has been no change – ALL TEN COUNCILLORS REPRESENT THE LOCAL COMMUNITY OF BIDFORD-ON-AVON PARISH.

It was an uncontested election – but there were no vacancies. A full list of Councillors, with contact details is available online at [www.bidfordonavon-pc.gov.uk/pdfs/contactlist.pdf](http://www.bidfordonavon-pc.gov.uk/pdfs/contactlist.pdf)

**I WISH YOU ALL A HAPPY 2016!**



...working to include all ages and walks of life in our Community

C/O Parish Office  
Bramley Way, Bidford-on-Avon.  
Tel: 01789 778653  
Email: [info@bidfordonavon-pc.gov.uk](mailto:info@bidfordonavon-pc.gov.uk)

## BIDFORD-ON-AVON PARISH COUNCIL PARISH COUNCIL MEETINGS

JANUARY TO MARCH 2016

### CONSULTATIVE PLANNING COMMITTEE MEETINGS

- Monday 11th January @ 7.30 pm
- Monday 8th February @ 7.30 pm
- Monday 14th March @ 7.30 pm

### PARISH COUNCIL MEETINGS

- Monday 25th January @ 7.30 pm
- Monday 29th February @ 7.30 pm
- Monday 21st March @ 7.30 pm

Agendas for the meetings are posted three days prior to the meeting and are available online.

# COMING SOON TO BIDFORD RURAL CINEMA...

A partnership between Bidford-on-Avon Parish Council and the Crawford Memorial Hall Management Committee. Films subject to change - check Parish Council website for latest details and trailers! For information call **01789 778653** or **07718 628925**.

**THE CRAWFORD MEMORIAL HALL, SALFORD ROAD, BIDFORD-ON-AVON B50 4EZ**

TICKET OFFICE OPENS **6.30pm** • FILMS START AT **7.00pm**

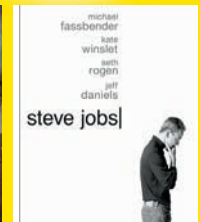
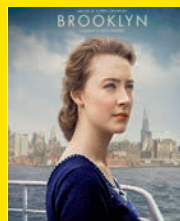


Friday 8th January  
• 111 minutes plus interval  
Tickets: Still only **£2.50!**

Refreshments available sponsored by your local



LOOK OUT FOR THESE FILMS  
**COMING SOON...**



**NEXT DATES: January 8th & 22nd • February 5th & 26th • Friday 4th & 18th**