

A fitter, stronger Fire and Rescue Service

Kenilworth Fire Station

Station Ground Information



WARWICKSHIRE
FIRE & RESCUE SERVICE

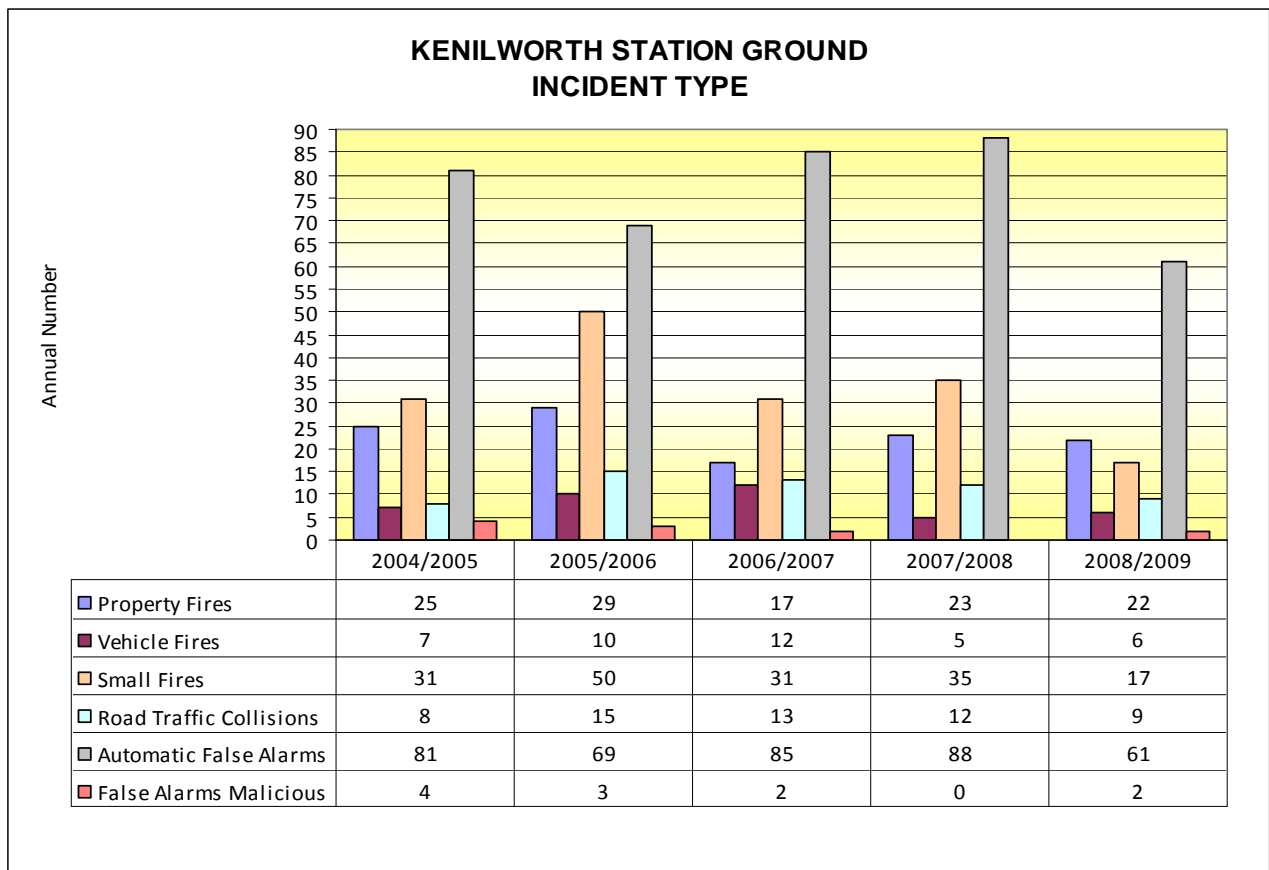
Introduction

A major factor in the proposed closure of Kenilworth fire station is to look at the emergency response cover provided by other fire stations in the area. This report gives evidence that all incidents are met within the current urban and rural response standards of 10 and 20 minutes from Leamington Spa wholetime fire station.

Kenilworth fire station currently provides emergency cover for incidents where, historically, there has been a lower life risk within its urban and surrounding rural areas close to West Midlands border.

Summary of Incidents

The chart below illustrates the number of incidents by type that have occurred within the Kenilworth station ground over a 5 year period between 1st April 2004 and 31st March 2009.



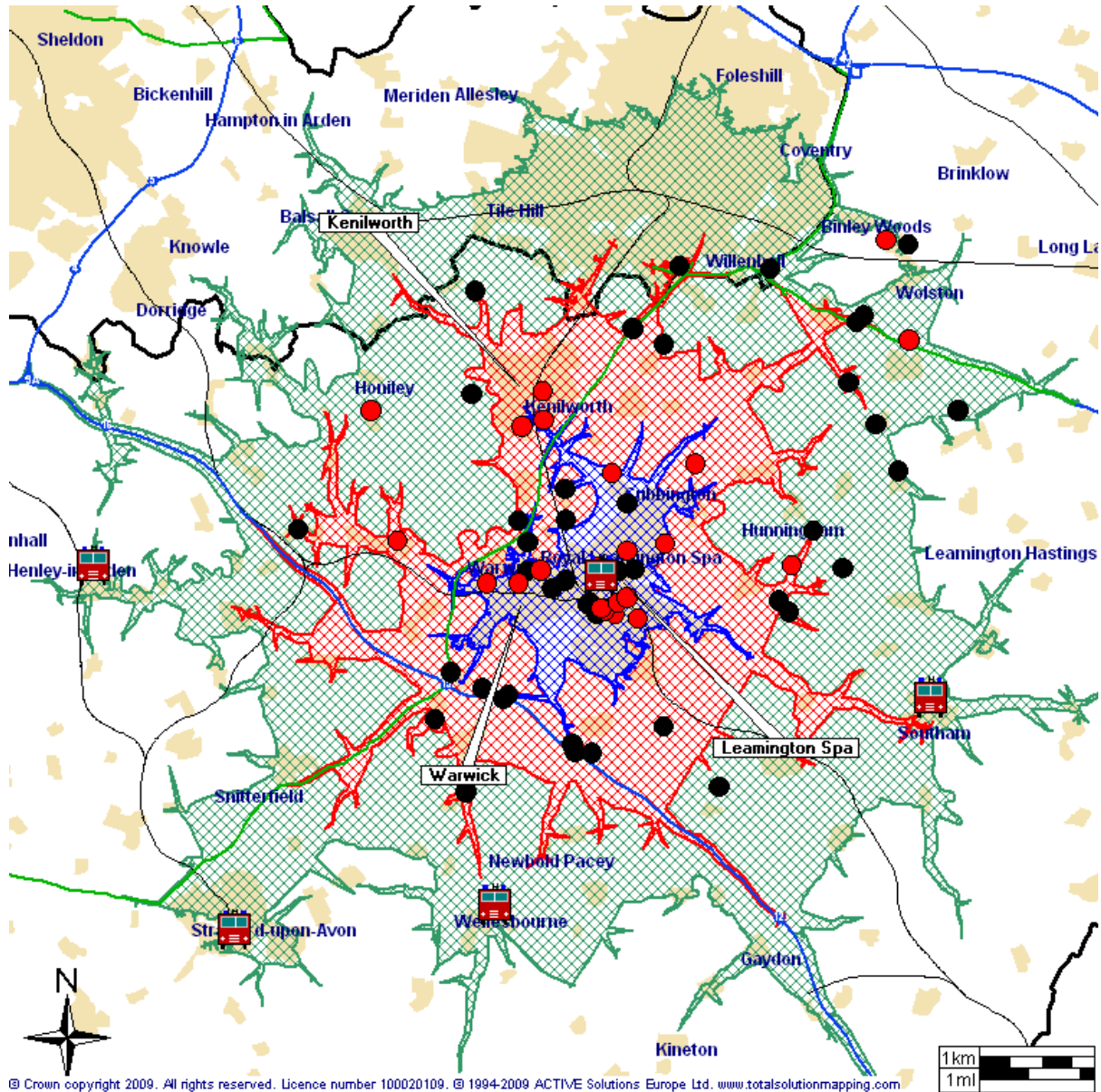
The table below shows whether the fire appliance based at Kenilworth has attended the incident on its own, with other fire appliances or if other appliances have attended without the home fire appliance.

%age of Incidents attended on own	13.5%
%age of incidents attended with others	47.2%
%age of Incidents others attended on own	39.3%

Incidents Where Lives Are At Risk Fires & Road Traffic Collisions

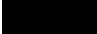


- The map on the following page shows how emergency response cover can be provided to Kenilworth's station ground and surrounding lower risk rural areas by the wholetime fire station in Leamington Spa within 5 minutes (blue), 10 minutes (red) and 15 minutes (green)
- Life risk incidents for fires and road traffic collisions (RTCs) between October 2007 and July 2009 are indicated on the map that shows all incidents are met within the current urban and rural response standards of 10 and 20 minutes from Leamington Spa
- When the proposal was run on the computer modelling tool, the Fire Service Emergency Cover Toolkit (FSEC), the model indicated there is no additional risk to lives in the area

Life Risk Incidents & Response Boundaries, Kenilworth (Oct 2007 – July 2009)

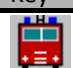


Warks Life Risk Incidents

Activity Key

Key	Count	Description
	50	RTC Extractions
	23	Primary Fires With Casualties
	73	Total

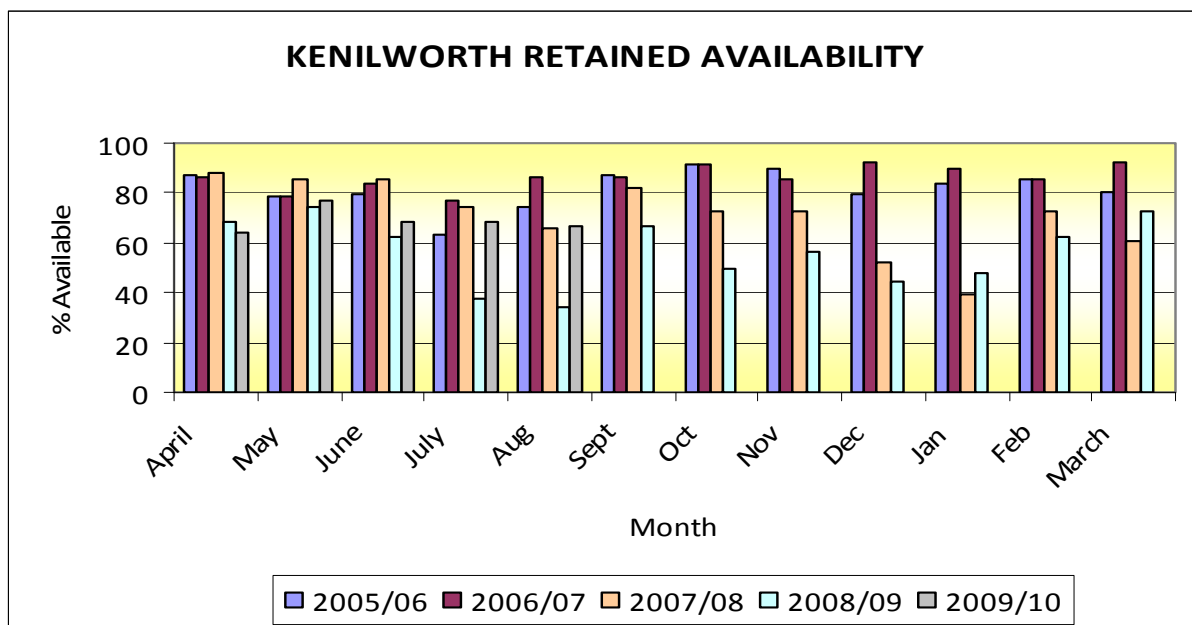
Site Key

Key	Description
	Station

The incident data provided on this map has been recorded between October 2007 and July 2009 covering a period of 20 months when Warwickshire Fire & Rescue Service began recording through a new fire report system called the Incident Recording System (IRS).

Availability

The 'Availability' of a station is the time when a station has its fire appliance available to attend emergency incidents. This can be affected by the number of fire fighters on duty to ride the vehicle in a safe manner which is normally a total of 5 riders per appliance. The appliance itself could also be unavailable due to maintenance and repair. Occasionally in some circumstances appliances from other stations will be asked to cover another station ground if they are on a training exercise.



	% Average Availability
2005/06	81.74
2006/07	86.32
2007/08	70.97
2008/09	68.01
2009/10*	64.40

*2009/10 data is taken from April 2009 to the end of August 2009

Financial Information

Kenilworth Fire Station

It currently costs in the region of £95,000 to fund Kenilworth Fire Station. By maintaining operational response from neighbouring station Leamington, this will enable the service to re-invest this resource into the development of a Small Fires/Community Fire Station Unit for the South of the County.

Glossary of Terms:

Automatic False Alarms - *Automatic fire alarms are installed into a property by a person or specialist company. If there is no fire and the alarm has been set off for another reason such as dust, insects or a malfunction of the alarm, this is classed as an Automatic False Alarm.*

Availability - *When a station has its fire appliances available to attend emergency incidents.*

False Alarm Malicious - *Emergency calls which are known to the caller as false and there is no danger present.*

Fire Service Emergency Cover Toolkit (FSEC) - *A computer based program which allows us to assess the different types of risks in different areas based on past emergency incidents.*

Incident Recording System (IRS) - *A new fire report system used by all Fire and Rescue Services across the country. All emergency incidents which are attended have a full report written up detailing the incident.*

Property Fires - *Fires which take place in homes and/or buildings which belong to someone and have value.*

Primary Fires - *Fires which occur in any type of property including homes, businesses and vehicles.*

Response Cover - *The expected distances fire crews can cover within a given time from the station.*

Retained Duty System (RDS) - *This involves trained fire fighters who may also have full time employment outside of the fire service who respond to emergency calls via a pager when needed within their local area.*

Road Traffic Collision (RTC) - *Is an incident where a vehicle collides with another vehicle or any other object which potentially causes people to be trapped within the vehicle.*

Special Services - *Types of incident where no fire takes place but includes incidents such as flooding and lift rescues.*

Small Fires - *Fires which occur in objects such as bins or grass that have a lesser value than primary fires.*

Wholetime Crewing System - *Stations where there are 4 rotating shifts of fire fighters which provide 24 hour cover every day of the year.*