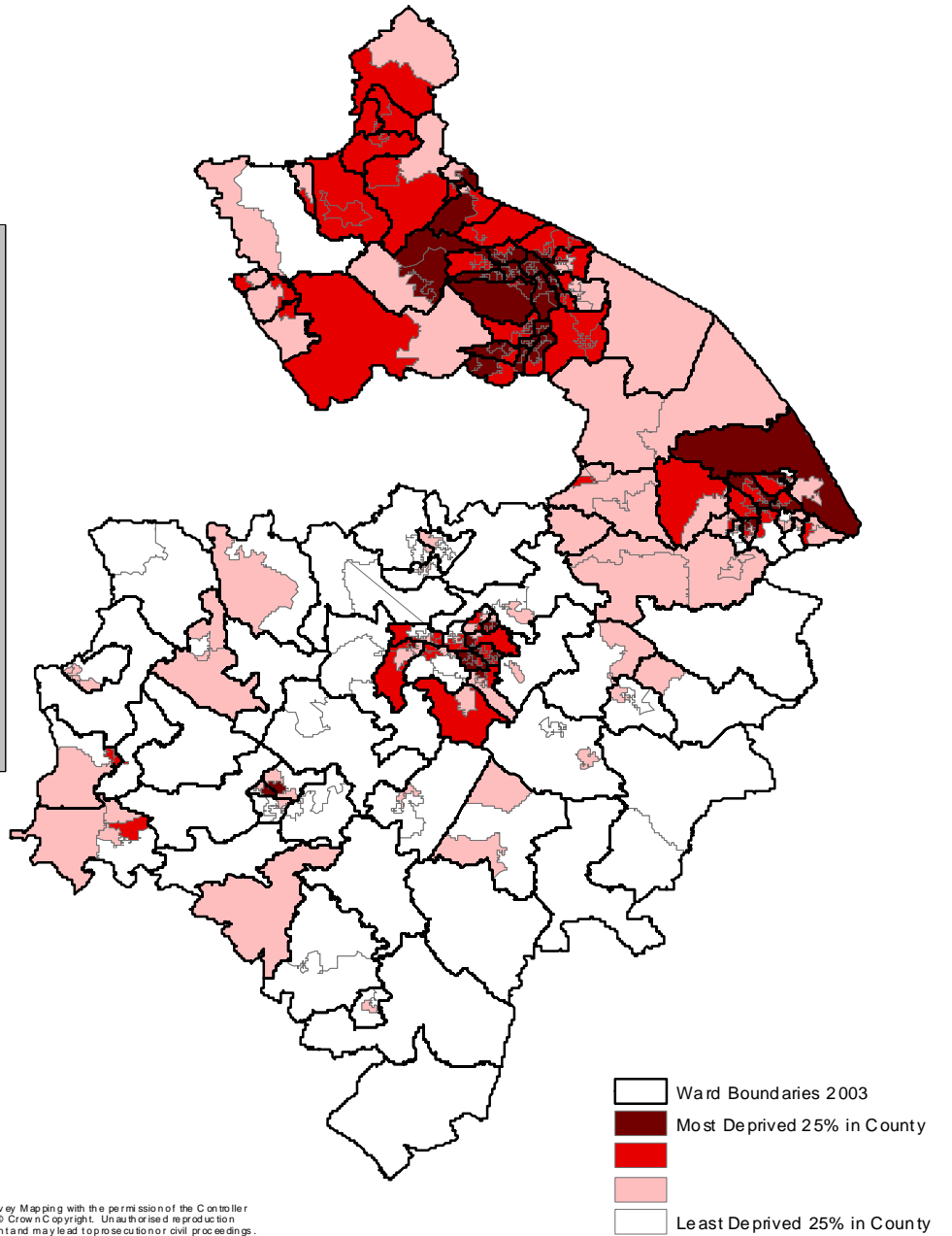
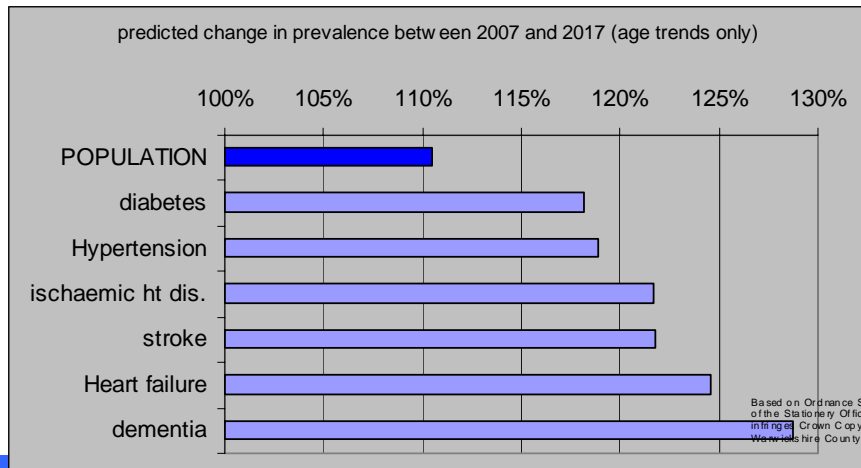
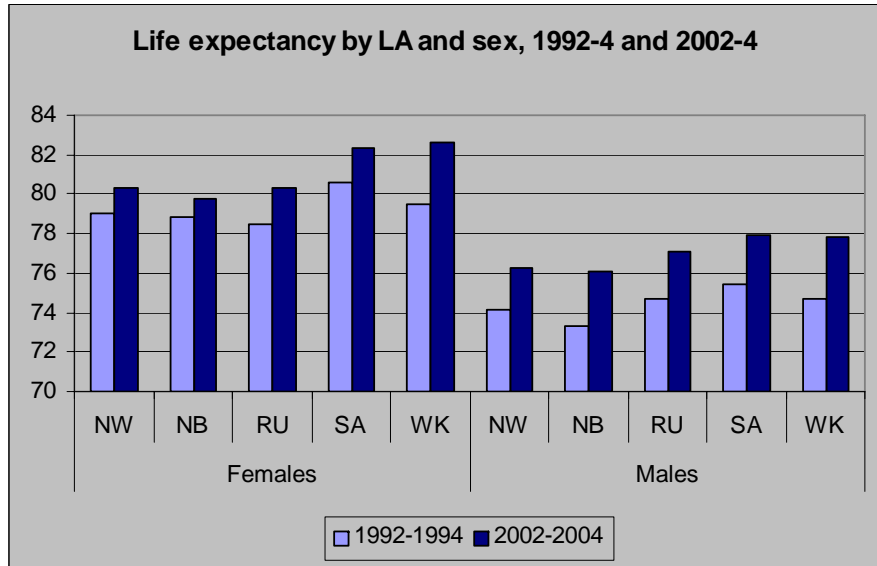


Commissioning for a Healthy Warwickshire

David Rose
Chief Executive

Case for Change



Warwickshire PCT

Developing our strategy

- Public Meetings in May, June
- Clinical workshops in Aug, Sept
 - Outputs of both sets of meetings were included in the strategy document
- Production of first draft version of strategy, Nov
- Consultation on strategy document in Nov, Dec
- Council meetings to discuss key principles and local priorities
- Amendments to the strategy presented to PCT Board in January
- Publication of final version of strategy document March

Overall Service Model

Centralisation & increasing specialisation

Haematological Cancers;
Acute Severe Trauma;
Paediatric Surgery;
Specialist Intensive Care;
Hyper-Acute Stroke Care.

Devolution & Improved local Access

Day Case Surgery;
Renal Dialysis;
Technological support in the home;
Chemotherapy;
Crisis Intervention;
Diagnostics;
Rehabilitation



Organisation of Services

Improved integration of clinical teams between tertiary and secondary care providers

Reshaping the role of the district general hospital to be more externally focussed - establishing expert clinical teams working in the community with primary care. Improved integration with social care.

Devolution of community and diagnostic services to Primary Care where geographically appropriate.

Joint partnership with local authority services to address inequalities in health.

- Shifting the balance of services by 10% from acute hospital to community

Seven Key Principles

1. Improving Access to Services
2. A Fully Engaged Public
3. Reducing health inequalities
4. Maintaining Independence
5. Ensuring Patient Safety
6. Clinically Effective Care
7. Productive and Efficient

Feedback on strategy

- Significant support for the need for change and the key principles
- Strengthen role of voluntary sector
- Developing local pharmacy
- More on activities to prevent ill-health
- Further development of chapter on mental health and learning disabilities

Warwickshire PCT

Future health care in Alcester

Background

- Opportunity to develop new health care facilities in Alcester
- Public consultation to gather local views
- Alcester has:
 - community hospital
 - 2 x GP practices
 - Insufficient access to NHS dental services
 - Good pharmacy services
 - GP and community hospital in need of re-development

Alcester Community Hospital

- 24 bed inpatient unit
- Day hospital
- Therapy services
- Diabetic retinopathy
- Midwife-led ante-natal units
- Mental health outpatient appointments
- Nurse-led clinics – continence / leg ulcers

Consultation process

- 1 February – 25 April 2008
- In partnership with Alcester Town Council
- Consultation document – to be distributed throughout Alcester and surrounding areas
- Public meetings
- Displays around Alcester
- Consultation document and online feedback form on website – www.warwickshirepct.nhs.uk
- Throughout consultation process – work to review activity and financial implications of proposals

Options for Alcester

- 1 Make no change
- 2 Continue to provide existing services in a new building on hospital site
- 3 Provide all existing day services in new building on hospital site (no inpatient beds)
- 4 Provide all day services in new building with small number of inpatient beds reflecting Alcester population needs

Potential new services for Alcester

- Community health teams to care for people in their own home
- Relocation of GP services onto hospital site
- New dental service
- Services to support healthy living
- Local authority, voluntary sector and social care services
- Outpatients and diagnostics

How to have your say

- Public meetings – publicised in local newsletters / newspapers
- Feedback form – distributed door to door with Town Council newsletter
- Online feedback form – www.warwickshirepct.nhs.uk

Warwickshire PCT